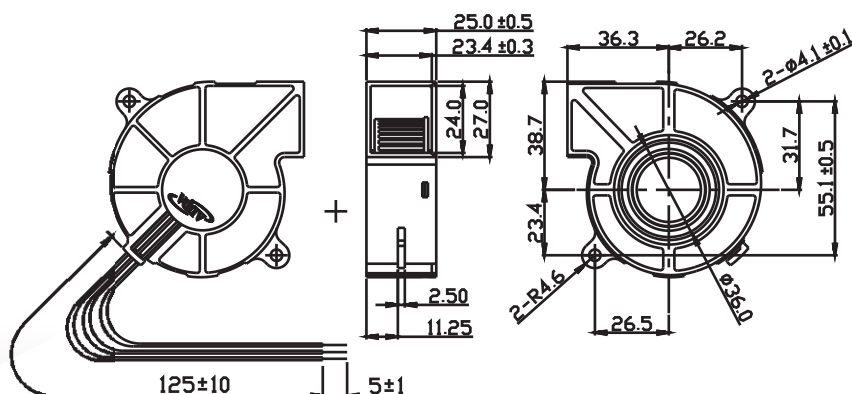
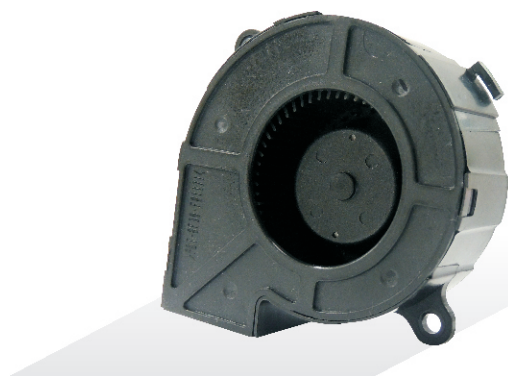




## AB7025 SERIES

### External Dimensions



Frame:Plastic(UL:94V-0)  
Impeller:Plastic(UL:94V-0)  
Lead wire:UL1007AWG24

### Specifications(Nominal)

\*:Noise is measured at the distance of one (1) meter from the axis of intake.

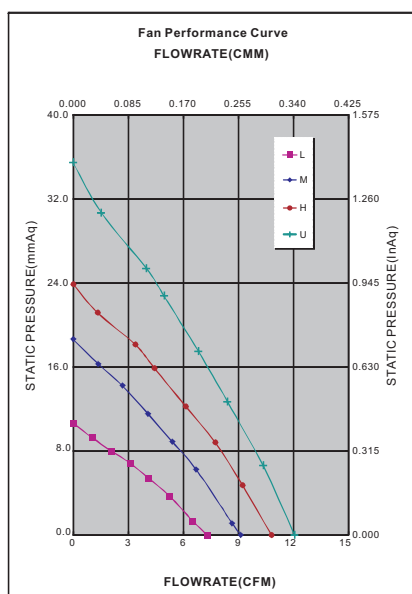
Bearing type: ◎=Ball ⊗=Sleeve ●=Hypro bearing

Frame size (mm)	Model No.	Bearing System Type	Rated Voltage (VDC)	Current (A)	Power (W)	Rated Speed (rpm)	Maximum AirFlow (CMM) (CFM)	Maximum Pressure (InAq) (mmAq)	*Noise Level (dB/A)	Weight (g)
70x70x25	AB07012LB250302	◎	12	0.15	1.80	2600	0.204 7.20	0.420 10.67	32.4	62.0
	AB07012MB250302	◎	12	0.20	2.40	3200	0.258 9.10	0.730 18.54	38.9	
	AB07012HB250302	◎	12	0.27	3.24	3800	0.306 10.80	0.940 23.88	41.8	
	AB07012UB250302	◎	12	0.33	3.96	4500	0.340 12.00	1.390 35.31	46.1	

Specifications subject to change without notice.

The specification for bearing type is for reference only , for more bearing types information, please contact with your ADDA sales representative, thanks!!

(網頁上呈現產品軸承資訊均以2Ball為主，若需其他產品資訊請聯絡您在ADDA的業務代表，謝謝！！)



\*Motor protective circuit and third lead wire functions

0	1	2	3	4	6	7	8	9	A	B
	✓	✓	✓							

\*Safety approvals

✓	✓		✓	✓